

Influenza Surveillance Report

Division of Epidemiology - Disease Surveillance and Investigation
District of Columbia Department of Health

2019-2020 Influenza Season Week 51 (December 15, 2019 – December 21, 2019)

(All data are preliminary and may change as more reports are received)

SUMMARY

- **181** new cases of influenza were reported by hospitals during this reporting period
- **Zero** pediatric deaths were reported during this period
- For the 2019-2020 influenza season to-date, **517** positive influenza cases have been reported
- DC Public Health Laboratory completed testing for 40 specimens during week 51
- Influenza activity increased since last week, and remains elevated

INFLUENZA SURVEILLANCE FROM HOSPITALS & AMBULATORY CARE FACILITIES

District of Columbia hospitals and laboratories report detailed information on cases of Influenza on a daily basis. However, in accordance with CDC guidelines, only Influenza-associated deaths in cases <18 years of age and Novel Influenza A infections are reportable. We also request that Influenza hospitalizations be reported if possible.

The table below summarizes weekly and cumulative cases of Influenza for the 2019-2020 Season. Data are also presented by age group and by number of cases reported weekly. During week 51 (December 15, 2019 – December 21, 2019), there were 517 new cases of influenza reported. A total of 768 tests were performed during week 51. To date, the District has received 517 positive influenza cases reported by all eight hospitals.

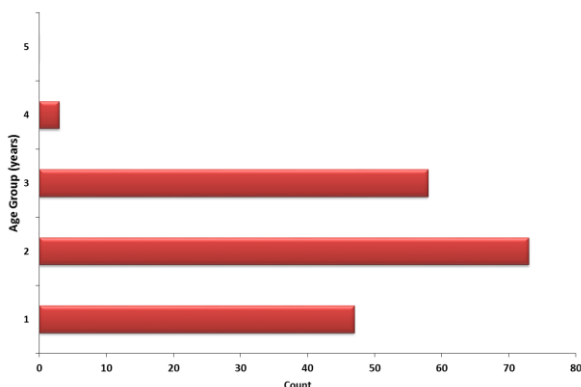
Surveillance of Influenza Cases Reported By Influenza Type

	Week 51 (December 15, 2019- December 21, 2019)		Cumulative Positive Cases for Weeks 40–20 (October 05, 2019– May 16, 2020)	
Influenza A	24	(13.26%)	95	(18.37%)
Influenza B	157	(86.74%)	417	(80.65%)
Influenza A/B	0	(0.00%)	5	(0.98%)
Influenza (not typed)	0	(0.00%)	0	(0.00%)
Total	181*	(100.00%)	517*	(100.00%)

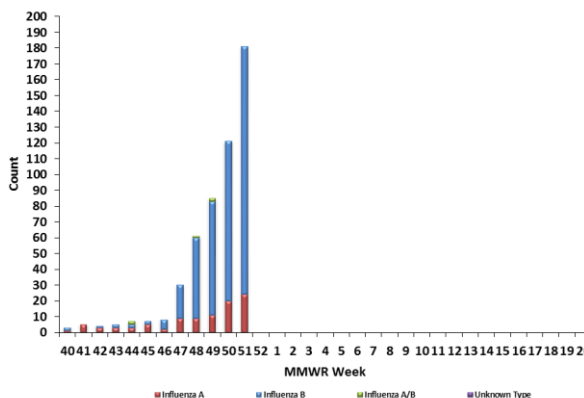
*Includes results from Rapid Diagnostic Testing, Viral Culture, RT-PCR, Serology, and Immunofluorescence.

**Age groups are classified as 1(0-4 years), 2 (5-24 years), 3(25-64 years), 4 (>64 years) & 5 (age not specified)

Positive Influenza Tests, by Age Group
Week 51 (15th Dec19-21stDec19)



Positive Influenza Tests by Reporting Week
September 29, 2019- May 16, 2020



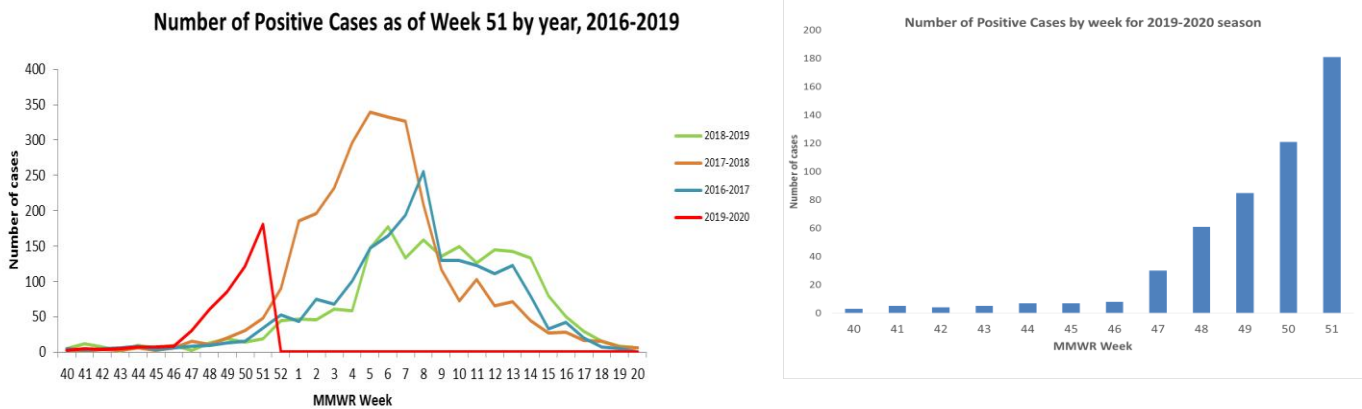
RAPID DIAGNOSTIC TESTING

Rapid Diagnostic Tests are screening tests used to detect the Influenza virus in a short period of time. While initially less accurate than PCR and viral culture, rapid diagnostics are more accurate as the Influenza season progresses. During week 51, 155 out of a total of 768 tests were performed using rapid diagnostic testing in clinical laboratories. Of these, 20 (12.90%) positive Influenza specimens were identified using rapid diagnostics.

Week: 51 (December 15, 2019 – December 21, 2019)	
No. of specimens tested Rapid Diagnostics	155
No. of positive specimens (%)	20 (12.90%)
Positive specimens by type/subtype	
Influenza A	6 (30.00%)
Influenza B	14 (70.00%)
Influenza A/B	0 (0.00%)
Influenza – unknown type	0 (0.00%)

WEEK 51 COMPARISON WITH PREVIOUS SEASONS

For week 51, there were 181 new cases reported in the current 2019-2020 season, 19 cases in last year's 2018-2019 season, 48 cases in the 2017-2018 season, 34 cases in the 2016-2017 season and 9 in the 2015-2016 season.



Cumulatively, there are a total of 517 cases in the District up to week 51 for the current season, 118 during the 2018-2019 season, 152 during the 2017-2018 season, 116 in the 2016-2017 season and 57 in the 2015-2016 season.

INFLUENZA-LIKE ILLNESS (ILI) SURVEILLANCE

Sentinel surveillance for ILI consists of five outpatient reporting sites for the District of Columbia. The sentinel surveillance sites report the total number of ILI cases encountered per week and the total number of patients seen at the clinic during that same week. For this system, ILI is defined as the existence of fever (temperature of 100°F [37.8°C] or greater) and a cough and/or a sore throat in the absence of a known cause other than Influenza.

For week 51, sentinel providers reported 681 out of 15348 visits (4.43%) that met the criteria for ILI.

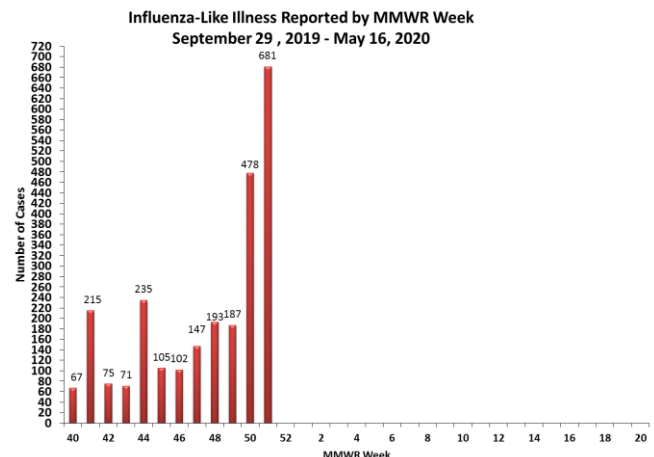
Geographic Spread of Influenza for Washington, DC

Week of	Activity *
Dec 15 – Dec 21	Local

***No Activity** – overall clinical activity remains low and there are no lab confirmed Influenza cases;

Sporadic – isolated lab confirmed Influenza cases reported and ILI activity is not increased;

Local – increased ILI activity and recent lab confirmed Influenza cases. As the District of Columbia is not a state, this is the highest level of ILI activity it can report.



INFLUENZA TESTING BY THE DISTRICT OF COLUMBIA PUBLIC HEALTH LABORATORY (DC PHL)

The DC PHL subtypes human isolates to monitor the circulating strains of Influenza. The isolates are submitted to the DC PHL by hospitals and commercial laboratories on a monthly basis. DC PHL completed testing for 40 specimens during week 51.

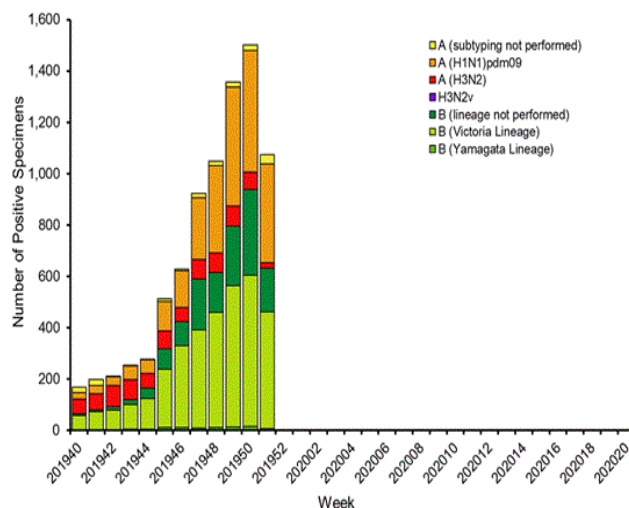
DC PHL Surveillance of Influenza Cases Reported By Influenza Subtype

DC PHL Influenza Testing	Dec 15, 2019 – Dec 21, 2019	Sep 29, 2019 -May 16, 2020
Number of specimens tested	40	441
Number of positive specimens	20 (50.0%)	47
Influenza A	2 (10.0%)	9 (19.14%)
A(H1N1)pdm09	1	7
H3N2	1	2
Influenza B	18 (90.0%)	38 (80.86%)
Yamagata lineage	0	0
Victoria lineage	18	38

NATIONAL INFLUENZA ASSESSMENT

Influenza activity in the United States continues to increase and has been elevated for seven weeks now. The proportion of deaths attributed to pneumonia and influenza (P&I) increased to 5.7% but remains below the epidemic threshold. Three influenza-associated pediatric deaths occurring in weeks 49 and week 51 were reported to CDC during week 51. All three were influenza B viruses. A total of 22 influenza-associated pediatric deaths occurring during the 2019-2020 season have been reported to CDC. During week 51, 1848 specimens were tested by public health laboratories, of which 1074 were positive. Of the 1074 respiratory specimens that tested positive during week 51, 443 (41.2%) were Influenza A and 631 (58.8%) were Influenza B. Of the Influenza A samples, 386 (94.8%) were 2009 H1N1, 21 (5.2%) were H3N2, and 36 were un-typed. Of the Influenza B samples, 456 (98.7%) were of the Victoria lineage, 6 (1.3%) were of Yamagata lineage and 169 had no lineage test performed.

Influenza Positive Tests Reported to CDC by U.S. Public Health Laboratories, National Summary, 2019-2020 Season



Get Vaccinated!

To find an Influenza vaccine provider, visit the District of Columbia Immunization Resource Center at <http://doh.dc.gov/node/190532>

DC HEALTH
GOVERNMENT OF THE DISTRICT OF COLUMBIA

For additional information about Influenza and Influenza activity in the United States, please visit: <http://www.cdc.gov/flu/index.htm>. Questions about Influenza in the District of Columbia or this report should be directed to the Division of Epidemiology - Disease Surveillance and Investigation at (202) 442-8141 or email flu.epi@dc.gov