

Influenza Surveillance Report

Division of Epidemiology - Disease Surveillance and Investigation
District of Columbia Department of Health

2019-2020 Influenza Season Week 04 (January 19, 2020 – January 25, 2020) *(All data are preliminary and may change as more reports are received)*

SUMMARY

- **233** new cases of influenza were reported by hospitals during this reporting period
- Zero pediatric deaths were reported during this period
- For the 2019-2020 influenza season to-date, **1926** positive influenza cases have been reported
- DC Public Health Laboratory completed testing for 6 specimens during week 4
- Influenza activity increased slightly from last week and continues to remain elevated

INFLUENZA SURVEILLANCE FROM HOSPITALS & AMBULATORY CARE FACILITIES

District of Columbia hospitals and laboratories report detailed information on cases of Influenza on a daily basis. However, in accordance with CDC guidelines, only Influenza-associated deaths in cases <18 years of age and Novel Influenza A infections are reportable. We also request that Influenza hospitalizations be reported if possible. The table below summarizes weekly and cumulative cases of Influenza for the 2019-2020 Season. Data are also presented by age group and by number of cases reported weekly. During week 04 (January 19, 2020 – January 25, 2020), there were 233 new cases of influenza reported. A total of 1091 tests were performed during week 04. To date, the District has received 1926 positive influenza cases reported by all seven hospitals.

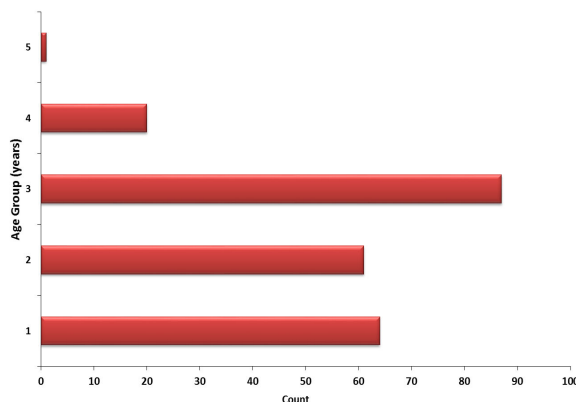
Surveillance of Influenza Cases Reported By Influenza Type

	Week 04 (January 19,2020- January 25,2020)		Cumulative Positive Cases for Weeks 40–20 (October 05, 2019– May 16, 2020)	
Influenza A	139	(59.66%)	633	(32.87%)
Influenza B	93	(39.91%)	1286	(66.77%)
Influenza A/B	0	(0.00%)	6	(0.31%)
Influenza (not typed)	1	(0.43%)	1	(0.05%)
Total	233*	(100.00%)	1926*	(100.00%)

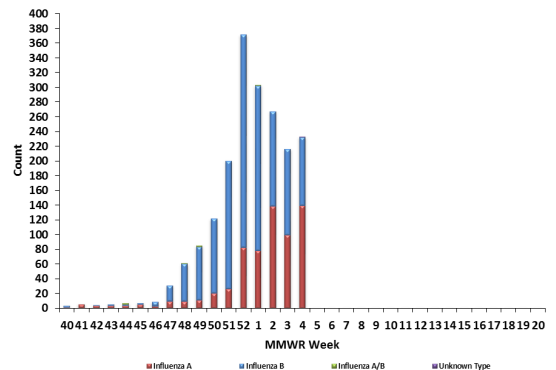
*Includes results from Rapid Diagnostic Testing, Viral Culture, RT-PCR, Serology, and Immunofluorescence.

**Age groups are classified as 1(0-4 years), 2 (5-24 years), 3(25-64 years), 4 (>64 years) & 5 (age not specified)

Positive Influenza Tests, by Age Group
Week 04 (19thJan20-25thJan20)



Positive Influenza Tests by Reporting Week
September 29, 2019- May 16, 2020



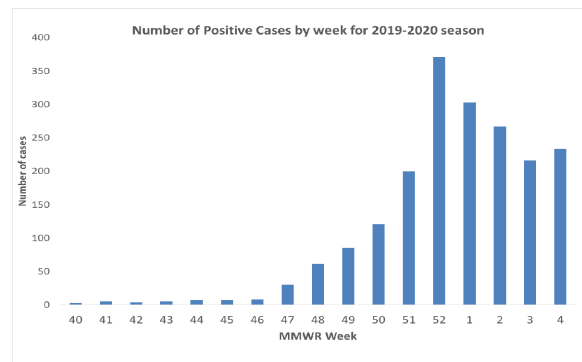
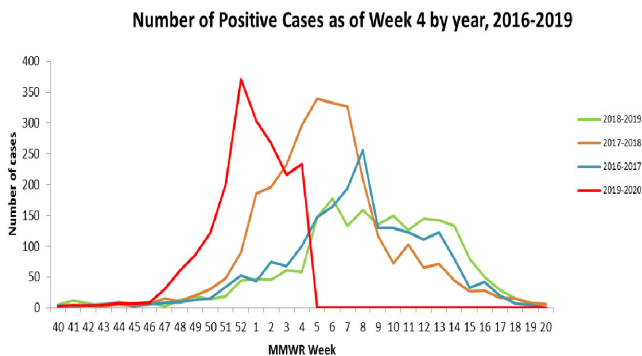
RAPID DIAGNOSTIC TESTING

Rapid Diagnostic Tests are screening tests used to detect the Influenza virus in a short period of time. While initially less accurate than PCR and viral culture, rapid diagnostics are more accurate as the Influenza season progresses. During week 4, 414 out of a total of tests were performed using rapid diagnostic testing in clinical laboratories. Of these, 55(13.28%) positive Influenza specimens were identified using rapid diagnostics.

Week: 04 (January 19, 2020 – January 25 , 2020)	
No. of specimens tested Rapid Diagnostics	414
No. of positive specimens (%)	55 (13.28%)
Positive specimens by type/subtype	
Influenza A	38 (69.09%)
Influenza B	16 (29.09%)
Influenza A/B	0 (0.0%)
Influenza – unknown type	1 (1.81%)

WEEK 4 COMPARISON WITH PREVIOUS SEASONS

For week 4, there were 233 new cases reported in the current 2019-2020 season, 59 cases in last year’s 2018-2019 season, 296 cases in the 2017-2018 season, 100 cases in the 2016-2017 season and 15 in the 2015-2016 season.



Cumulatively, there are a total of 1926 cases in the District up to week 04 for the current season, 317 during the 2018-2019 season, 856 during the 2017-2018 season, 355 in the 2016-2017 season and 82 in the 2015-2016 season.

INFLUENZA-LIKE ILLNESS (ILI) SURVEILLANCE

Sentinel surveillance for ILI consists of five outpatient reporting sites for the District of Columbia. The sentinel surveillance sites report the total number of ILI cases encountered per week and the total number of patients seen at the clinic during that same week. For this system, ILI is defined as the existence of fever (temperature of 100°F [37.8°C] or greater) and a cough and/or a sore throat in the absence of a known cause other than Influenza. For week 03, sentinel providers reported 427 out of 14737 visits (2.89%) that met the criteria for ILI.

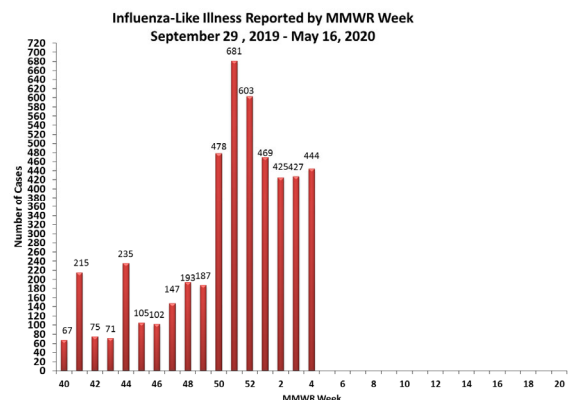
Geographic Spread of Influenza for Washington, DC

Week of	Activity *
Jan 18– Jan 25	Local

*No Activity – overall clinical activity remains low and there are no lab confirmed Influenza cases;

Sporadic – isolated lab confirmed Influenza cases reported and ILI activity is not increased;

Local – increased ILI activity and recent lab confirmed Influenza cases. As the District of Columbia is not a state, this is the highest level of ILI activity it can report.



INFLUENZA TESTING BY THE DISTRICT OF COLUMBIA PUBLIC HEALTH LABORATORY (DC PHL)

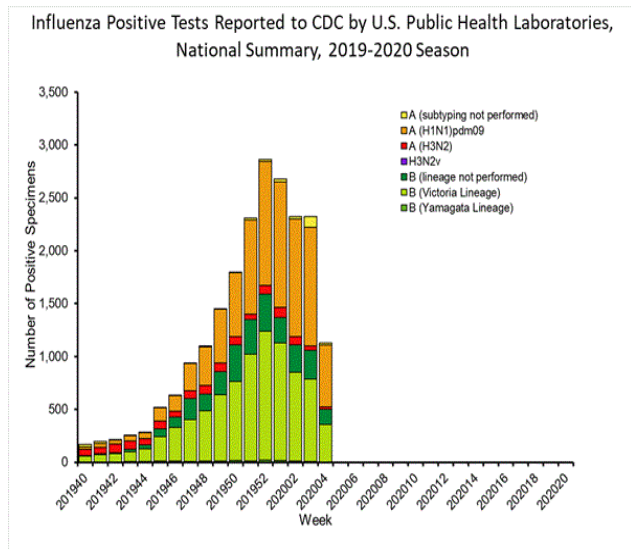
The DC PHL subtypes human isolates to monitor the circulating strains of Influenza. The isolates are submitted to the DC PHL by hospitals and commercial laboratories on a monthly basis. DC PHL completed testing for 6 specimens during week 04.

DC PHL Surveillance of Influenza Cases Reported By Influenza Subtype

DC PHL Influenza Testing	Jan 19, 2019 – Jan 25, 2020	Sep 29, 2019 -May 16, 2020
Number of specimens tested	6	590
Number of positive specimens	5 (83.33%)	99
Influenza A	5 (0.0%)	20 (20.20%)
A(H1N1)pdm09	5	15
H3N2	0	5
Influenza B	0 (0.0%)	79 (79.79%)
Yamagata lineage	0	0
Victoria lineage	0	79

NATIONAL INFLUENZA ASSESSMENT

Influenza activity in the United States slightly increased over the last two weeks and remains high. The proportion of deaths attributed to pneumonia and influenza (P&I) is 6.7% but remains below the epidemic threshold. A total of 68 influenza-associated pediatric deaths occurring during the 2019-2020 season have been reported to CDC. Of the 54 influenza-associated deaths, there were 45 deaths associated with influenza B viruses and 23 deaths with influenza A viruses. During week 04, 1801 specimens were tested by public health laboratories, of which 1129 were positive. Of the 1129 respiratory specimens that tested positive during week 04, 629 (55.7%) were Influenza A and 500 (44.3%) were Influenza B. Of the Influenza A samples, 585 (96.1%) were 2009 H1N1, 24 (3.9%) were H3N2, and 20 were un-typed. Of the Influenza B samples, 357 (99.7%) were of the Victoria lineage, 1 (0.3%) were of Yamagata lineage and 142 had no lineage test performed.



Get Vaccinated!

To find an Influenza vaccine provider, visit the District of Columbia Immunization Resource Center at <http://doh.dc.gov/node/190532>



For additional information about Influenza and Influenza activity in the United States, please visit: <http://www.cdc.gov/flu/index.htm>. Questions about Influenza in the District of Columbia or this report should be directed to the Division of Epidemiology - Disease Surveillance and Investigation at (202) 442-8141 or email flu.epi@dc.gov