

Influenza Surveillance Report

Division of Epidemiology - Disease Surveillance and Investigation
District of Columbia Department of Health

2019-2020 Influenza Season Week 02 (January 05, 2020 – January 11, 2020) *(All data are preliminary and may change as more reports are received)*

SUMMARY

- **267** new cases of influenza were reported by hospitals during this reporting period
- **47** additional cases were reported by hospitals for week 1
- **Zero** pediatric deaths were reported during this period
- For the 2019-2020 influenza season to-date, **1524** positive influenza cases have been reported
- DC Public Health Laboratory completed testing for 64 specimens during week 2
- Influenza activity decreased slightly but continues to remain elevated

INFLUENZA SURVEILLANCE FROM HOSPITALS & AMBULATORY CARE FACILITIES

District of Columbia hospitals and laboratories report detailed information on cases of Influenza on a daily basis. However, in accordance with CDC guidelines, only Influenza-associated deaths in cases <18 years of age and Novel Influenza A infections are reportable. We also request that Influenza hospitalizations be reported if possible. The table below summarizes weekly and cumulative cases of Influenza for the 2019-2020 Season. Data are also presented by age group and by number of cases reported weekly. During week 02 (January 05, 2020 – January 11, 2020), there were 267 new cases of influenza reported. A total of 1269 tests were performed during week 02. To date, the District has received 1524 positive influenza cases reported by all seven hospitals.

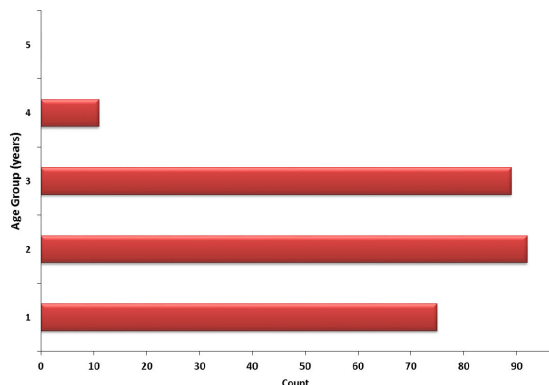
Surveillance of Influenza Cases Reported By Influenza Type

	Week 02 (January 05,2020- January 11,2020)		Cumulative Positive Cases for Weeks 40–20 (October 05, 2019– May 16, 2020)	
Influenza A	138	(51.69%)	412	(27.03%)
Influenza B	129	(48.30%)	1106	(72.57%)
Influenza A/B	1	(0.01%)	6	(0.40%)
Influenza (not typed)	0	(0.00%)	0	(0.00%)
Total	267*	(100.00%)	1524*	(100.00%)

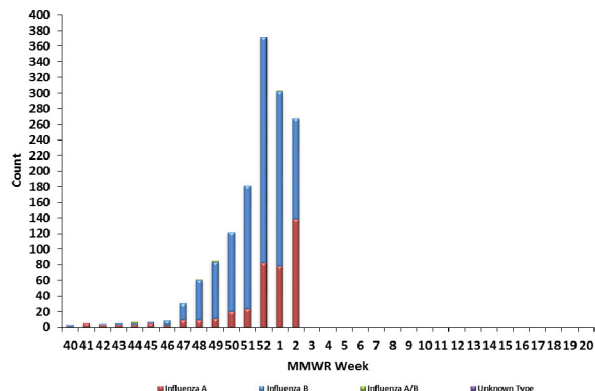
*Includes results from Rapid Diagnostic Testing, Viral Culture, RT-PCR, Serology, and Immunofluorescence.

**Age groups are classified as 1(0-4 years), 2 (5-24 years), 3(25-64 years), 4 (>64 years) & 5 (age not specified)

Positive Influenza Tests, by Age Group
Week 02 (5thJan20-11thJan20)



Positive Influenza Tests by Reporting Week
September 29, 2019- May 16, 2020



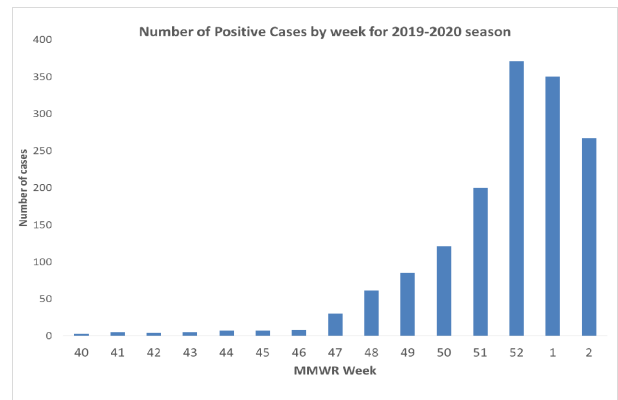
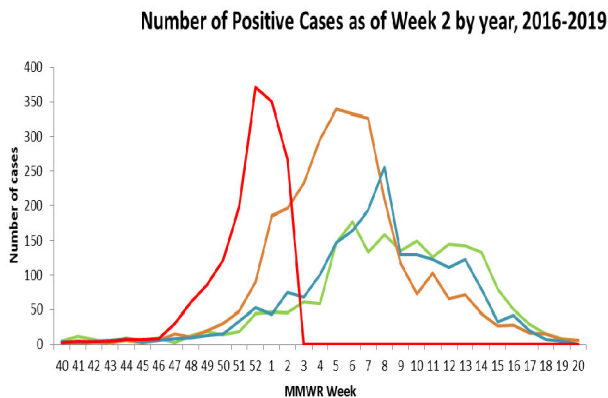
RAPID DIAGNOSTIC TESTING

Rapid Diagnostic Tests are screening tests used to detect the Influenza virus in a short period of time. While initially less accurate than PCR and viral culture, rapid diagnostics are more accurate as the Influenza season progresses. During week 2, 591 out of a total of 1269 tests were performed using rapid diagnostic testing in clinical laboratories. Of these, 28 (4.74%) positive Influenza specimens were identified using rapid diagnostics.

Week: 02 (January 05, 2020 – January 11, 2020)	
No. of specimens tested Rapid Diagnostics	591
No. of positive specimens (%)	28 (4.74%)
Positive specimens by type/subtype	
Influenza A	28 (100.0%)
Influenza B	0 (0.0%)
Influenza A/B	0 (0.0%)
Influenza – unknown type	0 (0.0%)

WEEK 2 COMPARISON WITH PREVIOUS SEASONS

For week 2, there were 267 new cases reported in the current 2019-2020 season, 46 cases in last year's 2018-2019 season, 196 cases in the 2017-2018 season, 75 cases in the 2016-2017 season and 7 in the 2015-2016 season.



Cumulatively, there are a total of 1210 cases in the District up to week 01 for the current season, 210 during the 2018-2019 season, 428 during the 2017-2018 season, 212 in the 2016-2017 season and 71 in the 2015-2016 season.

INFLUENZA-LIKE ILLNESS (ILI) SURVEILLANCE

Sentinel surveillance for ILI consists of five outpatient reporting sites for the District of Columbia. The sentinel surveillance sites report the total number of ILI cases encountered per week and the total number of patients seen at the clinic during that same week. For this system, ILI is defined as the existence of fever (temperature of 100°F [37.8°C] or greater) and a cough and/or a sore throat in the absence of a known cause other than Influenza.

For week 02, sentinel providers reported 425 out of 14362 visits (2.95%) that met the criteria for ILI.

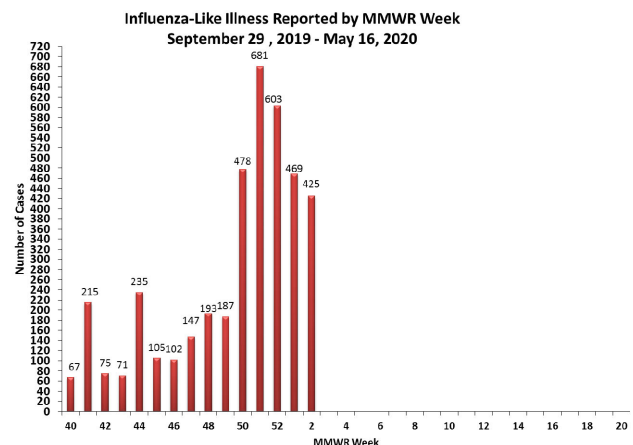
Geographic Spread of Influenza for Washington, DC

Week of	Activity *
Jan 05– Jan 11	Local

***No Activity** – overall clinical activity remains low and there are no lab confirmed Influenza cases;

Sporadic – isolated lab confirmed Influenza cases reported and ILI activity is not increased;

Local – increased ILI activity and recent lab confirmed Influenza cases. As the District of Columbia is not a state, this is the highest level of ILI activity it can report.



INFLUENZA TESTING BY THE DISTRICT OF COLUMBIA PUBLIC HEALTH LABORATORY (DC PHL)

The DC PHL subtypes human isolates to monitor the circulating strains of Influenza. The isolates are submitted to the DC PHL by hospitals and commercial laboratories on a monthly basis. DC PHL completed testing for 64 specimens during week 02.

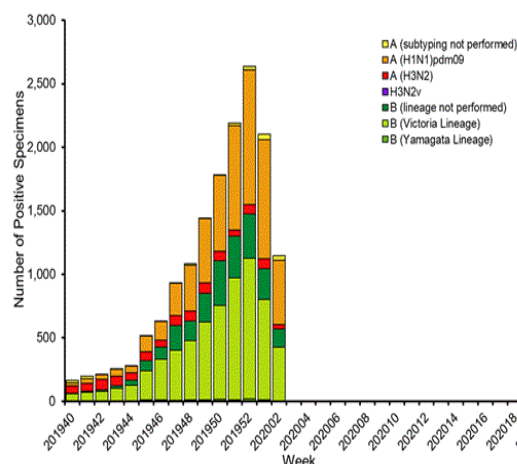
DC PHL Surveillance of Influenza Cases Reported By Influenza Subtype

DC PHL Influenza Testing	Jan 05, 2019 – Jan 11, 2020	Sep 29, 2019 -May 16, 2020
Number of specimens tested	64	556
Number of positive specimens	33 (51.57%)	92
Influenza A	5 (15.15%)	15 (16.30%)
A(H1N1)pdm09	3	10
H3N2	2	5
Influenza B	28 (84.85%)	77 (83.70%)
Yamagata lineage	0	0
Victoria lineage	28	77

NATIONAL INFLUENZA ASSESSMENT

Influenza activity in the United States declined slightly but remains high. The proportion of deaths attributed to pneumonia and influenza (P&I) is 6.9% but remains below the epidemic threshold. Seven influenza-associated pediatric deaths occurring in weeks 52, 1 and 2 were reported to CDC during week 2. All seven were associated with influenza B viruses that did not have lineage determined. A total of 39 influenza-associated pediatric deaths occurring during the 2019-2020 season have been reported to CDC. During week 02, 1904 specimens were tested by public health laboratories, of which 1148 were positive. Of the 1148 respiratory specimens that tested positive during week 02, 579 (50.4%) were Influenza A and 569 (49.6%) were Influenza B. Of the Influenza A samples, 504 (93.3%) were 2009 H1N1, 36 (6.7%) were H3N2, and 39 were un-typed. Of the Influenza B samples, 422 (98.8%) were of the Victoria lineage, 5 (1.2%) were of Yamagata lineage and 142 had no lineage test performed.

Influenza Positive Tests Reported to CDC by U.S. Public Health Laboratories, National Summary, 2019-2020 Season



Get Vaccinated!

To find an Influenza vaccine provider, visit the District of Columbia Immunization Resource Center at <http://doh.dc.gov/node/190532>



For additional information about Influenza and Influenza activity in the United States, please visit: <http://www.cdc.gov/flu/index.htm>. Questions about Influenza in the District of Columbia or this report should be directed to the Division of Epidemiology - Disease Surveillance and Investigation at (202) 442-8141 or email flu.epi@dc.gov