

Influenza Surveillance Report

Division of Epidemiology - Disease Surveillance and Investigation
District of Columbia Department of Health

2019-2020 Influenza Season Week 09 (February 23, 2020 – February 29, 2020)

(All data are preliminary and may change as more reports are received)

SUMMARY

- **188** new cases of influenza were reported by hospitals during this reporting period
- Zero pediatric deaths were reported during this period
- For the 2019-2020 influenza season to-date, **3182** positive influenza cases have been reported
- DC Public Health Laboratory completed testing for 55 specimens during week 9
- Influenza activity continues to remain elevated

INFLUENZA SURVEILLANCE FROM HOSPITALS & AMBULATORY CARE FACILITIES

District of Columbia hospitals and laboratories report detailed information on cases of Influenza on a daily basis. However, in accordance with CDC guidelines, only Influenza-associated deaths in cases <18 years of age and Novel Influenza A infections are reportable. We also request that Influenza hospitalizations be reported if possible. The table below summarizes weekly and cumulative cases of Influenza for the 2019-2020 Season. Data are also presented by age group and by number of cases reported weekly. During week 09 (February 23, 2020 – February 29, 2020), there were 188 new cases of influenza reported. A total of 1061 tests were performed during week 09. To date, the District has received 3182 positive influenza cases reported by all seven hospitals.

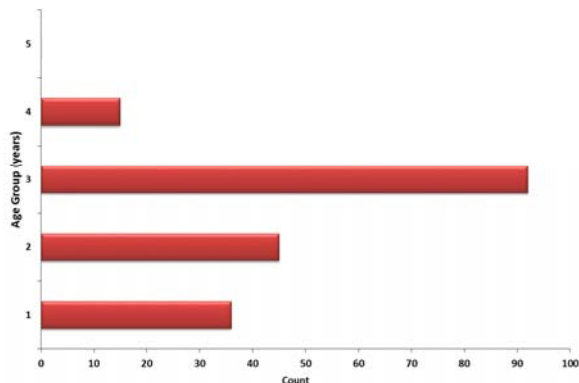
Surveillance of Influenza Cases Reported By Influenza Type

	Week 09 (February 23, 2020 - February 29, 2020)		Cumulative Positive Cases for Weeks 40–20 (October 05, 2019– May 16, 2020)	
Influenza A	168	(89.36%)	1640	(51.54%)
Influenza B	19	(10.11%)	1533	(48.18%)
Influenza A/B	0	(0.00%)	7	(0.23%)
Influenza (not typed)	0	(0.00%)	1	(0.03%)
Total	188*	(100.00%)	3182*	(100.00%)

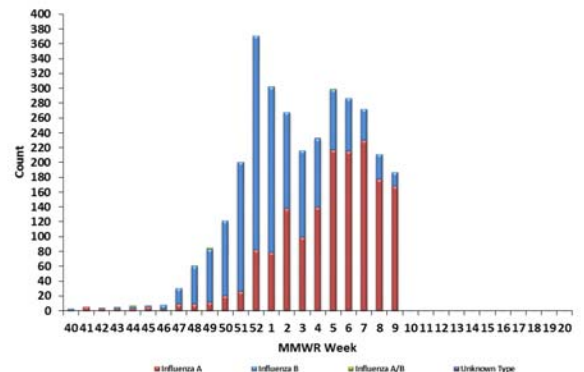
*Includes results from Rapid Diagnostic Testing, Viral Culture, RT-PCR, Serology, and Immunofluorescence.

**Age groups are classified as 1(0-4 years), 2 (5-24 years), 3(25-64 years), 4 (>64 years) & 5 (age not specified)

Positive Influenza Tests, by Age Group
Week 09 (23thFeb20-29thFeb20)



Positive Influenza Tests by Reporting Week
September 29, 2019- May 16, 2020



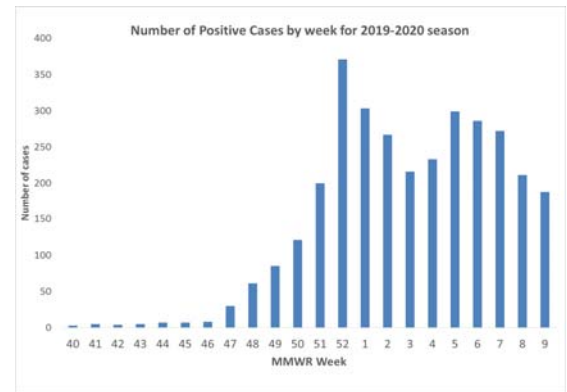
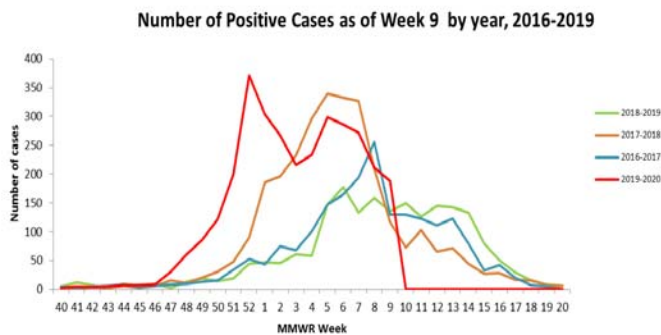
RAPID DIAGNOSTIC TESTING

Rapid Diagnostic Tests are screening tests used to detect the Influenza virus in a short period of time. While initially less accurate than PCR and viral culture, rapid diagnostics are more accurate as the Influenza season progresses. During week 9, 385 out of a total of tests were performed using rapid diagnostic testing in clinical laboratories. Of these, 38 (9.87%) positive Influenza specimens were identified using rapid diagnostics.

Week: 09 (February 23, 2020 – February 29, 2020)	
No. of specimens tested Rapid Diagnostics	385
No. of positive specimens (%)	38(9.87%)
Positive specimens by type/subtype	
Influenza A	33(86.84%)
Influenza B	5 (13.16%)
Influenza A/B	0 (0.0%)
Influenza – unknown type	0 (0.0%)

WEEK 9 COMPARISON WITH PREVIOUS SEASONS

For week 9, there were 188 new cases reported in the current 2019-2020 season, 135 cases in last year’s 2018-2019 season, 117 cases in the 2017-2018 season, 130 cases in the 2016-2017 season and 105 in the 2015-2016 season.



Cumulatively, there are a total of 3182 cases in the District up to week 09 for the current season, 1127 during the 2018-2019 season, 2476 during the 2017-2018 season, 1346 in the 2016-2017 season and 317 in the 2015-2016 season.

INFLUENZA-LIKE ILLNESS (ILI) SURVEILLANCE

Sentinel surveillance for ILI consists of five outpatient reporting sites for the District of Columbia. The sentinel surveillance sites report the total number of ILI cases encountered per week and the total number of patients seen at the clinic during that same week. For this system, ILI is defined as the existence of fever (temperature of 100°F [37.8°C] or greater) and a cough and/or a sore throat in the absence of a known cause other than Influenza.

For week 09, sentinel providers reported 350 out of 13624 visits (2.57%) that met the criteria for ILI.

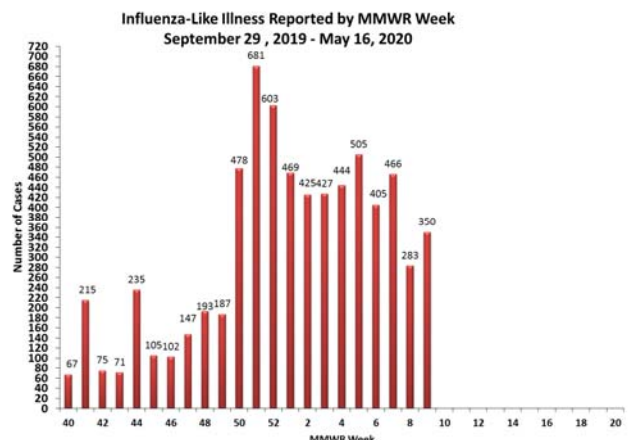
Geographic Spread of Influenza for Washington, DC

Week of	Activity *
Feb 23– Feb 29	Local

***No Activity** – overall clinical activity remains low and there are no lab confirmed Influenza cases;

Sporadic – isolated lab confirmed Influenza cases reported and ILI activity is not increased;

Local – increased ILI activity and recent lab confirmed Influenza cases. As the District of Columbia is not a state, this is the highest level of ILI activity it can report.



INFLUENZA TESTING BY THE DISTRICT OF COLUMBIA PUBLIC HEALTH LABORATORY (DC PHL)

The DC PHL subtypes human isolates to monitor the circulating strains of Influenza. The isolates are submitted to the DC PHL by hospitals and commercial laboratories on a monthly basis. DC PHL completed testing for 55 specimens during week 09.

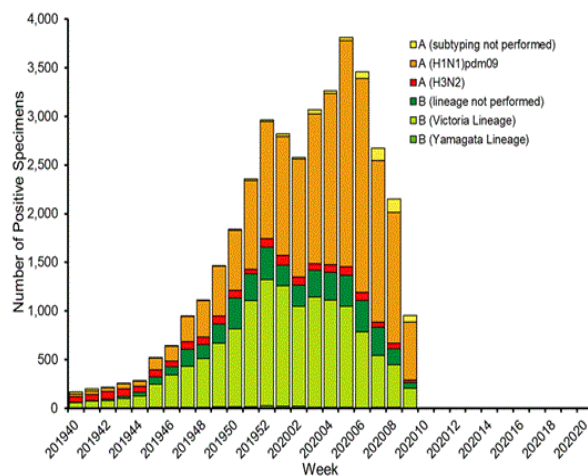
DC PHL Surveillance of Influenza Cases Reported By Influenza Subtype

DC PHL Influenza Testing	Feb 23, 2020 – Feb 29, 2020	Sep 29, 2019 -May 16, 2020
Number of specimens tested	55	883
Number of positive specimens	37 (67.27%)	253
Influenza A	35 (63.64%)	140 (13.5%)
A(H1N1)pdm09	32	118
H3N2	3	13
Influenza B	2 (3.64%)	113(55.77%)
Yamagata lineage	1	1
Victoria lineage	1	112

NATIONAL INFLUENZA ASSESSMENT

Influenza activity in the United States decreased slightly this week but continues to remain high. The proportion of deaths attributed to pneumonia and influenza (P&I) is 6.9% but remains below the epidemic threshold. A total of 136 influenza-associated pediatric deaths occurring during the 2019-2020 season have been reported to CDC between weeks 51 and 9. Of the 136 influenza-associated deaths, there were 93 deaths associated with influenza B viruses and 43 deaths with influenza A viruses. During week 09, 1594 specimens were tested by public health laboratories, of which 953 were positive. Of the 953 respiratory specimens that tested positive during week 09, 692 (72.6%) were Influenza A and 261 (27.4%) were Influenza B. Of the Influenza A samples, 596 (95.2%) were 2009 H1N1, 30 (4.8%) were H3N2, and 66 were un-typed. Of the Influenza B samples, 207 (100%) were of the Victoria lineage, and 54 had no lineage test performed.

Influenza Positive Tests Reported to CDC by U.S. Public Health Laboratories, National Summary, 2019-2020 Season



Get Vaccinated!

To find an Influenza vaccine provider, visit the District of Columbia Immunization Resource Center at <http://doh.dc.gov/node/190532>



For additional information about Influenza and Influenza activity in the United States, please visit: <http://www.cdc.gov/flu/index.htm>. Questions about Influenza in the District of Columbia or this report should be directed to the Division of Epidemiology - Disease Surveillance and Investigation at (202) 442-9370 or email flu.epi@dc.gov