

Influenza Surveillance Report

Division of Epidemiology - Disease Surveillance and Investigation
District of Columbia Department of Health

2019-2020 Influenza Season Week 15 (April 5, 2020 – April 11, 2020)

(All data are preliminary and may change as more reports are received)

SUMMARY

- 5 new cases of influenza were reported by hospitals during this reporting period
- Zero pediatric deaths were reported during this period
- For the 2019-2020 influenza season to-date, **3607** positive influenza cases have been reported
- DC Public Health Laboratory completed testing for 111 specimens during weeks 10 to 15
- Influenza activity continues to decrease in the District

**COVID-19 pandemic is affecting healthcare seeking behavior. The number of persons and their reasons for seeking care in the outpatient and ED settings is changing. These changes impact ILINet data in ways that are difficult to differentiate from changes in illness levels, therefore ILINet data should be interpreted with caution*

INFLUENZA SURVEILLANCE FROM HOSPITALS & AMBULATORY CARE FACILITIES

District of Columbia hospitals and laboratories report detailed information on cases of Influenza on a daily basis. However, in accordance with CDC guidelines, only Influenza-associated deaths in cases <18 years of age and Novel Influenza A infections are reportable. We also request that Influenza hospitalizations be reported if possible. The table below summarizes weekly and cumulative cases of Influenza for the 2019-2020 Season. Data are also presented by age group and by number of cases reported weekly. During week 15 (April 5, 2020 – April 11, 2020), there were 5 new cases of influenza reported. A total of 403 tests were performed during week 15. To date, the District has received 3607 positive influenza cases reported by all seven hospitals.

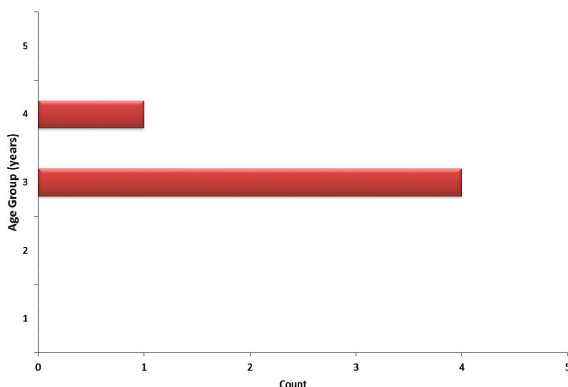
Surveillance of Influenza Cases Reported By Influenza Type

	Week 15 (April 05, 2020 – April 11, 2020)		Cumulative Positive Cases for Weeks 40–20 (October 05, 2019– May 16, 2020)	
	Count	Percentage	Count	Percentage
Influenza A	4	(80.00%)	2052	(56.25%)
Influenza B	0	(0.00%)	1586	(43.47%)
Influenza A/B	1	(0.00%)	9	(0.24%)
Influenza (not typed)	0	(20.00%)	1	(0.04%)
Total	5*	(100.00%)	3648*	(100.00%)

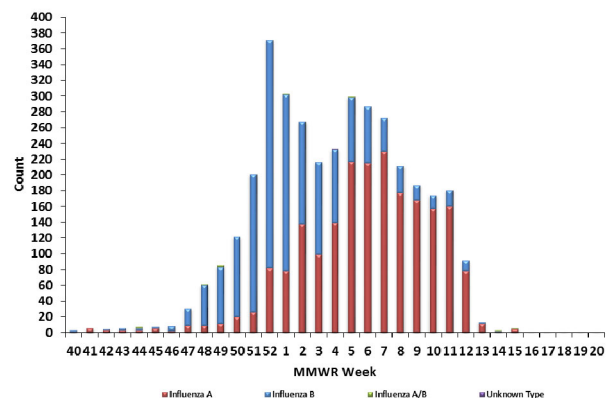
*Includes results from Rapid Diagnostic Testing, Viral Culture, RT-PCR, Serology, and Immunofluorescence.

**Age groups are classified as 1(0-4 years), 2 (5-24 years), 3(25-64 years), 4 (>64 years) & 5 (age not specified)

Positive Influenza Tests, by Age Group
Week 15 (4thApr20-11thApr20)



Positive Influenza Tests by Reporting Week
September 29, 2019- May 16, 2020



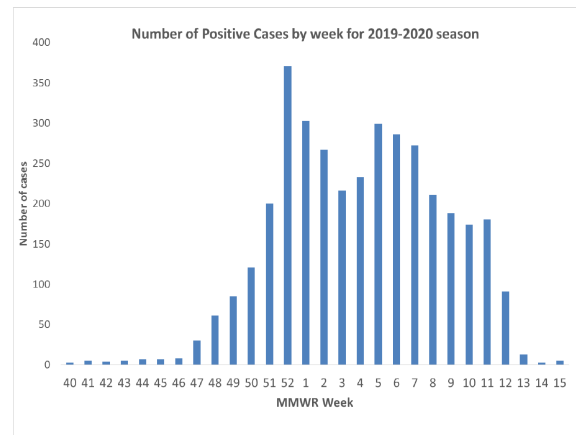
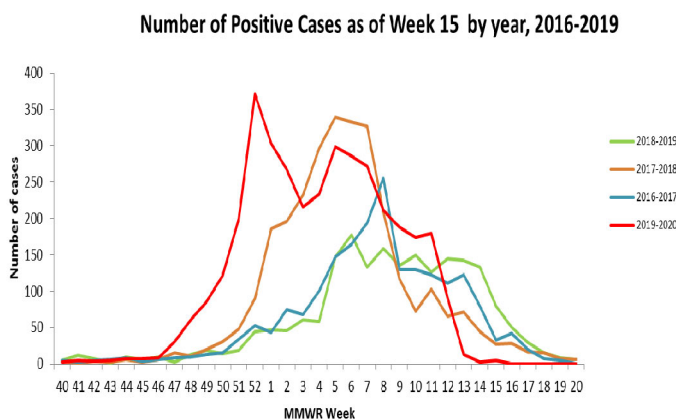
RAPID DIAGNOSTIC TESTING

Rapid Diagnostic Tests are screening tests used to detect the Influenza virus in a short period of time. While initially less accurate than PCR and viral culture, rapid diagnostics are more accurate as the Influenza season progresses. During week 15, 235 out of 403 total of tests were performed using rapid diagnostic testing in clinical laboratories. Of these, 4 (1.70%) positive Influenza specimens were identified using rapid diagnostics.

Week: 15 (April 5, 2020 – April 11, 2020)	
No. of specimens tested Rapid Diagnostics	235
No. of positive specimens (%)	4(1.70%)
Positive specimens by type/subtype	
Influenza A	4(100.00%)
Influenza B	0 (0.00%)
Influenza A/B	0 (0.0%)
Influenza – unknown type	0 (0.0%)

WEEK 15 COMPARISON WITH PREVIOUS SEASONS

For week 15, there were 5 new cases reported in the current 2019-2020 season, 79 cases in last year’s 2018-2019 season, 27 cases in the 2017-2018 season, 33 cases in the 2016-2017 season and 49 in the 2015-2016 season.



Cumulatively, there are a total of 3648 cases in the District up to week 15 for the current season, 1901 during the 2018-2019 season, 2860 during the 2017-2018 season, 1946 in the 2016-2017 season and 926 in the 2015-2016 season.

INFLUENZA-LIKE ILLNESS (ILI) SURVEILLANCE

Sentinel surveillance for ILI consists of five outpatient reporting sites for the District of Columbia. The sentinel surveillance sites report the total number of ILI cases encountered per week and the total number of patients seen at the clinic during that same week. For this system, ILI is defined as the existence of fever (temperature of 100°F [37.8°C] or greater) and a cough and/or a sore throat in the absence of a known cause other than Influenza.

For week 15, sentinel providers reported 362 out of 8798 visits (4.11%) that met the criteria for ILI.

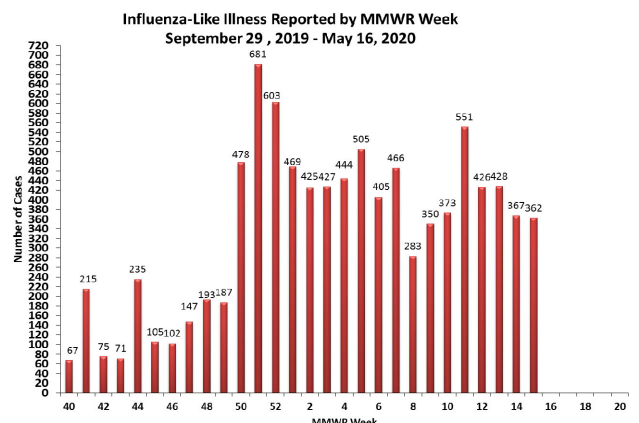
Geographic Spread of Influenza for Washington, DC

Week of	Activity *
April 5- April 11	<i>Sporadic</i>

***No Activity** – overall clinical activity remains low and there are no lab confirmed Influenza cases;

Sporadic – isolated lab confirmed Influenza cases reported and ILI activity is not increased;

Local – increased ILI activity and recent lab confirmed Influenza cases. As the District of Columbia is not a state, this is the highest level of ILI activity it can report.



INFLUENZA TESTING BY THE DISTRICT OF COLUMBIA PUBLIC HEALTH LABORATORY (DC PHL)

The DC PHL subtypes human isolates to monitor the circulating strains of Influenza. The isolates are submitted to the DC PHL by hospitals and commercial laboratories on a monthly basis. DC PHL completed testing for 11 specimens during week 10-15.

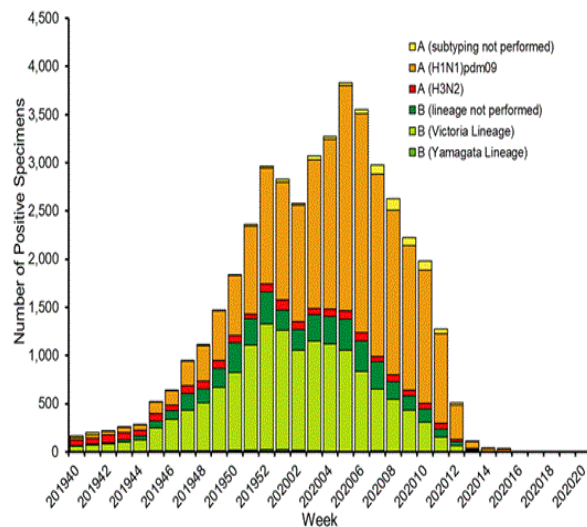
DC PHL Surveillance of Influenza Cases Reported By Influenza Subtype

DC PHL Influenza Testing	Mar 1, 2020 – Apr 11, 2020	Sep 29, 2019 -May 16, 2020
Number of specimens tested	111	994
Number of positive specimens	58 (52.25%)	311
Influenza A	46 (79.31%)	186 (59.80%)
A(H1N1)pdm09	42	160
H3N2	4	26
Influenza B	12 (20.68%)	125(40.20%)
Yamagata lineage	4	5
Victoria lineage	8	120

NATIONAL INFLUENZA ASSESSMENT

Influenza activity in the United States continues to decrease. The proportion of deaths attributed to pneumonia and influenza (P&I) is 11.9% and is above the epidemic threshold. A total of 2 influenza-associated pediatric deaths occurring during the 2019-2020 season have been reported to CDC this week. One death was associated with an influenza B/Victoria virus and other death was associated with an influenza B/Victoria virus. A total of 168 pediatric deaths occurring during the 2019-2020 season have been reported to CDC. During week 15, 475 specimens were tested by public health laboratories, of which 28 were positive. Of the 28 respiratory specimens that tested positive during week 15, 26 (92.85%) were Influenza A and all the 26 were 2009 H1N1. 2 specimens were un-typed.

Influenza Positive Tests Reported to CDC by U.S. Public Health Laboratories, National Summary, 2019-2020 Season



Get Vaccinated!

To find an Influenza vaccine provider, visit the District of Columbia Immunization Resource Center at <http://doh.dc.gov/node/190532>



For additional information about Influenza and Influenza activity in the United States, please visit: <http://www.cdc.gov/flu/index.htm>. Questions about Influenza in the District of Columbia or this report should be directed to the Division of Epidemiology - Disease Surveillance and Investigation at (202) 442-9370 or email flu.epi@dc.gov